
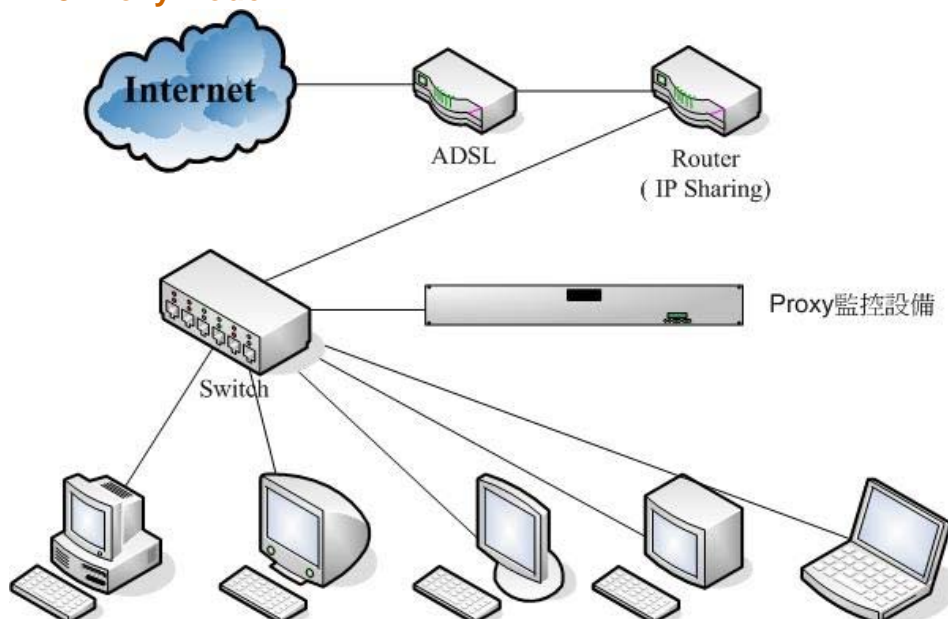


[Home](#) | [Site Map](#)Language: **JFT**[HOME](#) | [NEWS](#) | [PRODUCTS](#) | [SUPPORT](#) | [ABOUT US](#)

**Sales Hotline**  
**(646) 233-2017**
**MISKeeper Support**[User Menu](#)[Install](#)[Download](#)[About Maintenance](#)[Software maintenance Treaty](#)[Hardware maintenance Treaty](#)[Customer Service](#)[Q&A](#)**Technical Articles**[IM records model\(up\)](#)[IM records model\(down\)](#)

## IM records model(down)

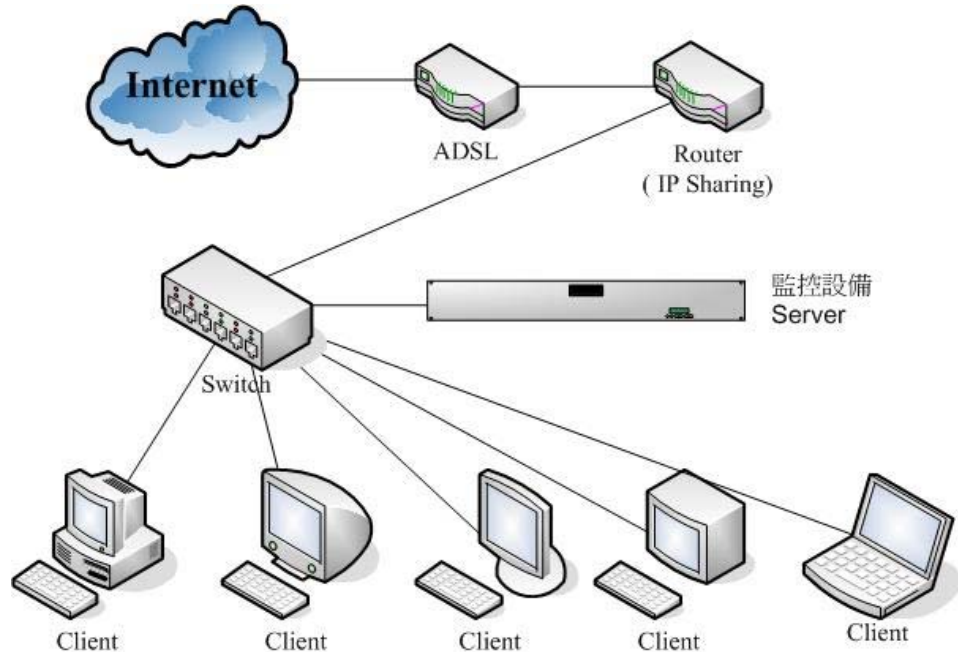
### 3.Proxy Mode



Cache model, this model is similar to your use of IE in the internal cache server settings, this machine on the network side of a demand-oriented Taiwan cache server and the cache server is our control Equipment, then the cache belonging to the passage of the packets can be measured by monitoring equipment recorded, the benefits of ex ... yes, by the way, you can have a cache server, the foreign demand for network management can be good, but In fact, he is the servant of the Rio In-Line Mode, the user can run as is the deformation of the In-Line Mode, of course, inherited all the advantages and disadvantages, but you can set the firewall will be part of the service Or the user can not connect through the Proxy, so even if the equipment problems will not affect business-critical services and users, relatively speaking, Proxy Mode in the network structure, set up, operation and difficult to rule out the Appears to have many difficulties, to do disaster response is also very hard ... If it were not for such a network structure had normal or a lot of time, the proposal would

not draw their own petard. All other Internet users, traffic will be Proxy Mode of the flow of equipment, further out, so the device which is four times the network traffic flow, if the number of users, or more than 1, Chengde from the demand for such machines is also a high price and poor Maintenance.

#### 4.Client-Server Mode



Master-slave model of the structure, basically all the pure software solutions are based on this framework, some of the other manufacturers is to increase the use of soft hardware, part of the system using the client software, server hardware to use part of the analysis, the benefits of this model Installation is simple and convenient, the network environment and little effect on performance for a variety of network architecture contains VPN, Vlan, inter-network, control can external flows, foreign control of the strong points, but the biggest drawback is that customers End systems must be installed to use the program and integration into the system, as well as the use of this model have been found with the staff of the counter may be, so if there are internal control policies and public advocacy and persuasion of this model is very appropriate, But if business owners want is a dark, or pick it unknowingly install a better model, by the way, this model is only an opportunity to do so for encrypted communications software to monitor and control measurements were recorded in the model, is also true Can effectively control the use of a Super Node mode to connect Skype model.

[HOME](#) | [NEWS](#) | [PRODUCTS](#) | [SUPPORT](#) | [ABOUT US](#)

JFETEK JAPAN © 2008 All right Reserved | [Privacy Policy](#) | [Terms Of Use](#)